



Professional Fans Owner's Manual

misting & non-misting



HydroMist™

a division of Flame Technologies

P.O. Box 1776
Cedar Park, TX 78630

Call: 512-225-0923

Email: orders@hydromistusa.com

<http://www.HydroMistUSA.com>

©2018 HydroMist. All rights reserved.

Updated 05/15/23.

The purpose of this document is to be informative, and as such is not guaranteed to be error-free. HydroMist takes steps to ensure that our information is correct and as error-free as is reasonable. Please let us know if you believe you found a typo or error.

Contents

What’s In the Box 4

Warnings 4

Dimensions 4

Assembly 7

Operation. 9

 Tilting 9

 Oscillation 9

 Speed Control (control on fan motor) 9

 Speed Control (in-line cord control). 9

Replacement Parts—18" Fan Head 10

Replacement Parts—24" Fan Head 11

Winterizing Instructions for Misting Fan Heads 12

HydroMist One (1) Year Limited Warranty 12

Available Professional Fan Models 13

What’s In the Box

QTY	DESCRIPTION
1	Fan Only ~or~ Fan with Misting Ring and Hose Adapter (only with misting fans)
5 or 8	Misting Nozzles (only with misting fans); 5 for 18" and 8 for 24"
1	Wall Mounting Bracket
2	Fan Bracket Screws
1	Owner’s Manual

Warnings

Read and follow all instructions before operating fan. Do not use fan if any parts are damaged or missing. Do not bend blades.

Do not expose the fans to water from a high-pressure cleaner (pressure washer). Doing so could lead to electrical shock or damage to the motor.

Always disconnect fan from power outlet before cleaning, moving or repositioning.

To clean, simply wipe down with soapy water & gently rinse with a hose. Dry fan before reconnecting to power outlet.

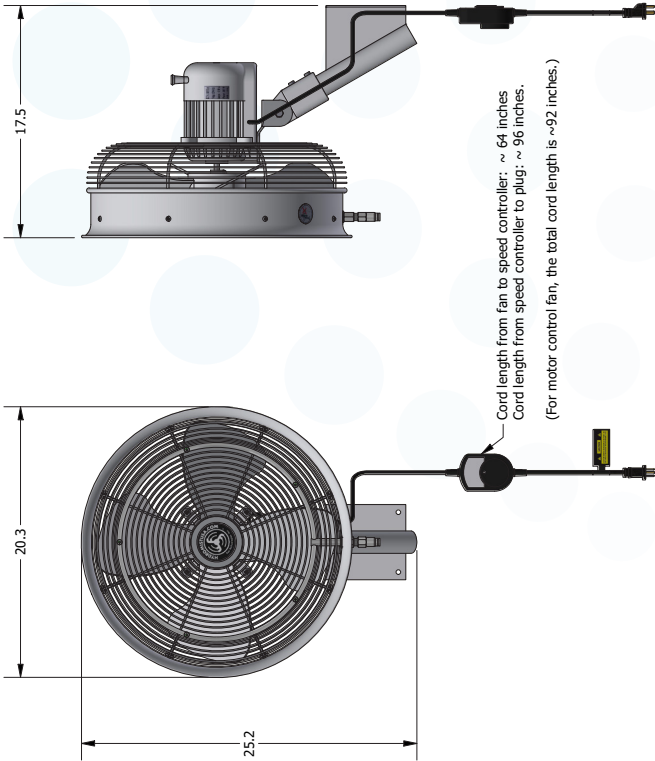
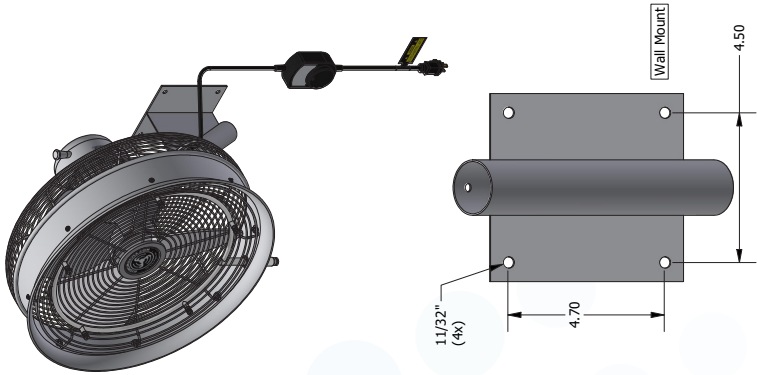
Never insert fingers or any other objects through grills while fan is operating.

Do not operate mist in freezing weather conditions. Misting components must be winterized to prevent damage.

Motor bearings are sealed and do not require additional lubrication.

Dimensions

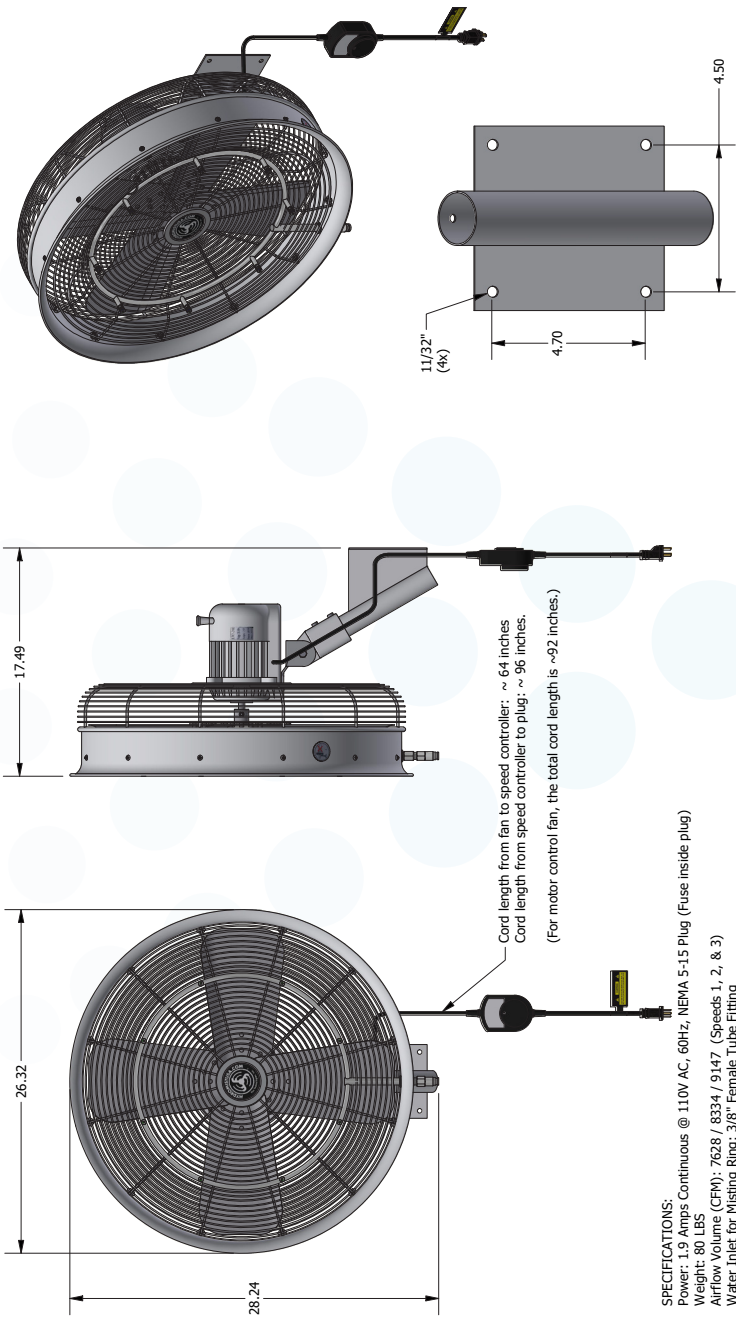
See drawings next two pages.



NOTES: UNLESS OTHERWISE SPECIFIED

1. Dimensions may vary slightly depending on fan mounting position, tilt position, and area of oscillation.

SPECIFICATIONS:
Power: 1.6 Amps Continuous @ 110V AC, 60Hz, NEMA 5-15 Plug (Fuse inside plug)
Weight: 6.5 LBS
Airflow Volume (CFM): 3567 / 4273 / 5156 (Speeds 1, 2, & 3)
Water Inlet for Mist King: 3/8" Female Tube Fitting



NOTES: UNLESS OTHERWISE SPECIFIED
1. Dimensions may vary slightly depending on fan mounting position, tilt position, and area of oscillation.

SPECIFICATIONS:
Power: 1.9 Amps Continuous @ 110V AC, 60Hz, NEMA 5-15 Plug (Fuse inside plug)
Weight: 80 LBS
Airflow Volume (CFM): 7628 / 8334 / 9147 (Speeds 1, 2, & 3)
Water Inlet for Mist Ring: 3/8" Female Tube Fitting

Assembly

User is responsible for determining feasibility of wall material for appropriately securing the bracket. Sleeve anchors may cause certain materials, such as brick & sandstone, to crack. If drywall is involved, a stud must be used for at least two of the anchor points.

Bear in mind that the fans weigh about 30 lbs. each. The wood screws require a 1/8" pilot hole. When using the metal anchors in brick, stucco, mortar, or similar material, use a 3/8" masonry bit to drill your holes for the anchor. When drilling into concrete or similar hard material, a 7/16" masonry bit may work better to allow extra installation clearance for the anchor.

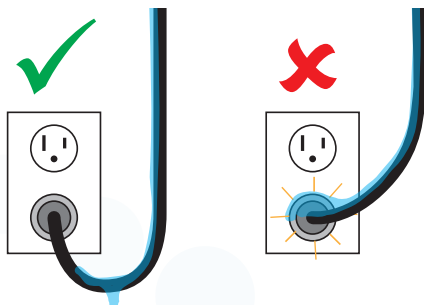
If you are unsure of the proper installation methods required to safely mount the fan bracket, and/or lack the proper tools for installation, hire a qualified professional to provide assistance.

Be sure the fan has plenty of room to oscillate without hitting objects and is not too close to a pathway.

18" fans work best at installed height between 8–10 feet, measured from the ground up to the bottom of the mounting bracket. 24" fans are recommended to mount at or above 10 feet for best airflow coverage.

Please take into consideration the locations of nearby power outlets for the power cord to plug into. Note that your installation may require a lower fan mounting height due to wind or weather that may interfere with the airflow from the fan. Also consider the appearance of the fans if aesthetics are a primary factor in choosing a mounting location.

NOTICE! When securing power cables on outdoor installations, loop them below and back up to the power outlet. This makes any moisture collection on the cable drip to the floor instead of into the outlet.

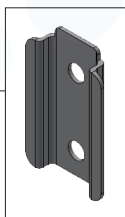


WARNING! In-line cord control models do not have a reasonable cable configuration for hard-wiring. It is ill-advised to cut the power cable. If hard-wiring is to be done with any fan model, it is recommended to seek a licensed electrician. *Hard-wiring may void the warranty.*



The speed control knob for the cord control fans is shipped with the mounting bracket inserted into the plastic housing on the back side.

Remove the metal bracket and mount in the desired location with the flanges facing out and away from the wall.



Slide the speed control housing down onto the top of the bracket, lining up the flanges with the grooves in the back of the plastic housing.

Operation

Tilting

Make sure fan is unplugged from power outlet and properly secured to a mounting bracket. Firmly move fan head to desired position. Tilt mechanism clicks at predefined angles for solid hold.

Oscillation

Press down on the oscillation knob (top of fan motor) to make the fan oscillate. Pull up on the oscillation knob to make the fan stop oscillating.

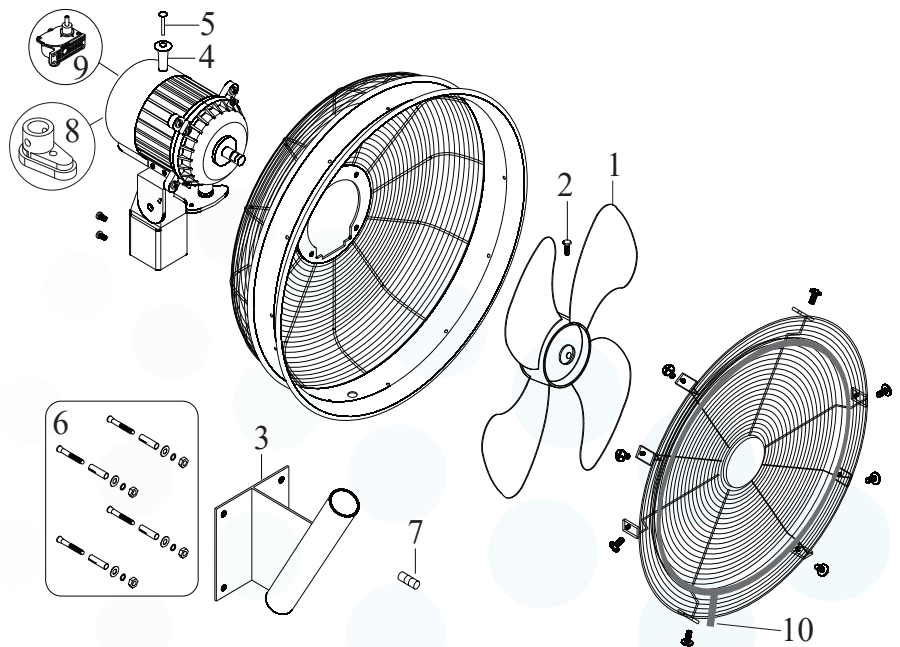
Speed Control (control on fan motor)

Turn knob on side of the fan motor to set the desired fan speed. 0, 1, 2, 3 designates Off, Low, Medium, High respectively.

Speed Control (in-line cord control)

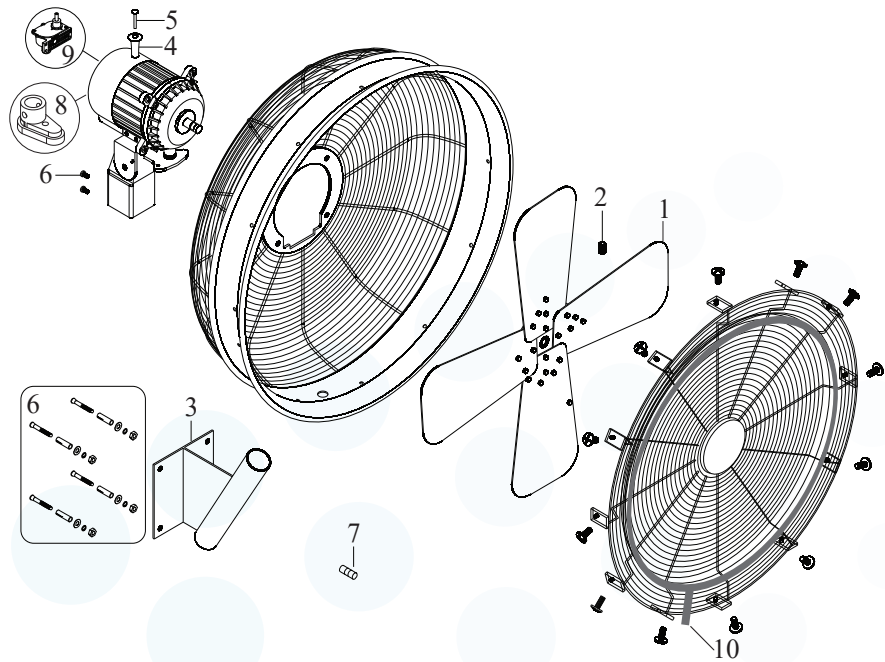
Turn knob on the in-line cable control to set the desired fan speed. 0, 1, 2, 3 designates Off, Low, Medium, High respectively.

Replacement Parts—18" Fan Head



ITEM	QTY	DESCRIPTION	PART NO.
1 white	1	18" Fan Blade	F10-10-057
1 black	1	18" Fan Blade	F10-10-061
2	1	Set Screw for 18" Fan Blade	F10-10-058
3 white	1	White Wall Bracket	F10-10-059
3 black	1	Black Wall Bracket	F10-10-062
4 white	1	White Oscillating Knob	F10-10-053
4 black	1	Black Oscillating Knob	F10-10-063
5	1	Oscillating Knob Screw	F10-10-054
(not shown)	5	Misting Nozzle (10/24 thread)	F10-08-001
6	1	Repair Kit, Wall Mount Hardware	F10-10-113
7	1	Fuse, (inside the fan plug)	F10-10-111
8	1	Oscillator Arm Drive Bushing	F10-10-103
9	1	Oscillator Assembly	not available
10	1	5 Nozzle Misting Ring for 18" Fan	F10-11-007

Replacement Parts—24" Fan Head



ITEM	QTY	DESCRIPTION	PART NO.
1 metal	1	24" Fan Blade	F10-10-066
2	1	Set Screw for 24" Fan Blade	F10-10-065
3 white	1	White Wall Bracket	F10-10-059
3 black	1	Black Wall Bracket	F10-10-062
4 white	1	White Oscillating Knob	F10-10-053
4 black	1	Black Oscillating Knob	F10-10-063
5	1	Oscillating Knob Screw	F10-10-054
(not shown)	8	Misting Nozzle (10/24 thread)	F10-08-001
6	1	Repair Kit, Wall Mount Hardware	F10-10-113
7	1	Fuse, (inside the fan plug)	F10-10-111
8	1	Oscillator Arm Drive Bushing	F10-10-103
9	1	Oscillator Assembly	not available
10	1	8 Nozzle Misting Ring for 24" Fan	F10-11-008

Winterizing Instructions for Misting Fan Heads

1. Remove all nozzles from fan ring. This allows the nylon hose and rings to completely drain, which prevents breakage due to freezing.
2. Clean the nozzles with 50/50 diluted vinegar and warm water. Do not use harsh chemicals as they will harm the o-rings.
3. Store nozzles in a small container or bag to prevent them from collecting dust while not in use.
4. For harsh winter weather conditions, cover or store the fan heads to prevent them from becoming damaged.

HydroMist One (1) Year Limited Warranty

All HydroMist products are warranted for a period of one (1) year for defects in workmanship and materials under normal use and service. This warranty is extended solely to the original purchaser. In order to initiate this warranty, the product registration form must be completed and sent to HydroMist, along with a copy of the purchase invoice, within 30 days of purchase.

Altering the construction of a fan in any manner not prescribed by this manual is not considered normal use and may void the warranty. This includes, but is not limited to, cutting the cord or modifying the bracket.

In General: If a HydroMist product fails because of defect in material or workmanship under normal use and maintenance within one year from date of purchase, we will, at our option and after inspection, repair or replace the defective product.

About your Warranty: Fan products, like all mechanical devices, need periodic parts and service to perform well. Normal use and service means not to operate in excess of recommended maximum speeds, pressures, temperatures or using fluids not recommended or compatible with component materials.

Available Professional Fan Models

PART NO.	DESCRIPTION
F10-01-006	24" Black Misting Fan Head with 8 Nozzles, Corded Control
F10-01-007	24" White Misting Fan Head with 8 Nozzles, Corded Control
F10-01-016	24" Black Misting Fan Head with 8 Nozzles, On-Motor Control
F10-01-017	24" White Misting Fan Head with 8 Nozzles, On-Motor Control
F10-01-011	18" Black Misting Fan Head with 5 Nozzles, Corded Control
F10-01-012	18" White Misting Fan Head with 5 Nozzles, Corded Control
F10-01-015	18" Black Misting Fan Head with 5 Nozzles, On-Motor Control
F10-01-013	18" White Misting Fan Head with 5 Nozzles, On-Motor Control
F10-14-006	24" Black Fan Head, Corded Control
F10-14-007	24" White Fan Head, Corded Control
F10-14-016	24" Black Fan Head, On-Motor Control
F10-14-017	24" White Fan Head, On-Motor Control
F10-14-011	18" Black Fan Head, Corded Control
F10-14-012	18" White Fan Head, Corded Control
F10-14-015	18" Black Fan Head, On-Motor Control
F10-14-013	18" White Fan Head, On-Motor Control
F10-14-021	18" Brown Fan Head, Corded Control
F10-14-022	18" Brown Fan Head, On-Motor Control
F10-14-023	24" Brown Fan Head, Corded Control
F10-14-024	24" Brown Fan Head, On-Motor Control
F10-01-027	18" Silver Fan Head with 5 Nozzles, On-Motor Control
F10-01-028	24" Silver Fan Head with 8 Nozzles, On-Motor Control
F10-01-029	24" Silver Fan Head with 8 Nozzles, Corded Control
F10-01-030	18" Silver Fan Head with 5 Nozzles, Corded Control
F10-14-027	18" Silver Fan Head, On-Motor Control
F10-14-028	24" Silver Fan Head, On-Motor Control
F10-14-029	24" Silver Fan Head, Corded Control
F10-14-030	18" Silver Fan Head, Corded Control

NOTES

Handwriting practice lines consisting of 20 horizontal blue lines. The first 10 lines are decorated with a pattern of light blue and white circles.



